


Lively up yourself

Bob Marley & The Wailers "Natty dread" 1974

Bob Marley

Swing 
♩ = 128

Transcription by Andreas Brink

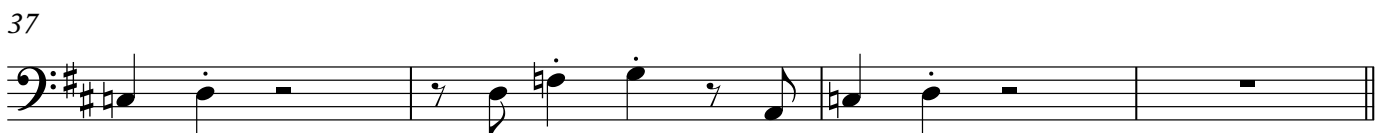
Intro



9 Chorus 1



25 Verse 1



41 **Chorus 2**

Measures 41-44 of Chorus 2. The bass line features a rhythmic pattern of eighth notes and quarter notes, with a triplet of eighth notes in measure 42. The key signature is two sharps (F# and C#).

45

Measures 45-48 of Chorus 2. The bass line continues the rhythmic pattern from the previous staff, including a triplet of eighth notes in measure 46.

49

Measures 49-52 of Chorus 2. The bass line continues the rhythmic pattern, including a triplet of eighth notes in measure 50.

53

Measures 53-56 of Chorus 2. The bass line continues the rhythmic pattern, including a triplet of eighth notes in measure 54. The staff ends with a double bar line.

57 **Verse 2**

Measures 57-60 of Verse 2. The bass line features a slower, more melodic pattern with dotted notes and rests. The key signature is two sharps.

61

Measures 61-64 of Verse 2. The bass line continues the melodic pattern from the previous staff.

65

Measures 65-68 of Verse 2. The bass line continues the melodic pattern from the previous staff.

69

Measures 69-72 of Verse 2. The bass line continues the melodic pattern from the previous staff. The staff ends with a double bar line.

73 **Chorus 2**

Measures 73-76 of Chorus 2. The bass line returns to the rhythmic pattern of the first chorus, including a triplet of eighth notes in measure 74.

77

Measures 77-80 of Chorus 2. The bass line continues the rhythmic pattern, including a triplet of eighth notes in measure 78. The staff ends with a double bar line.

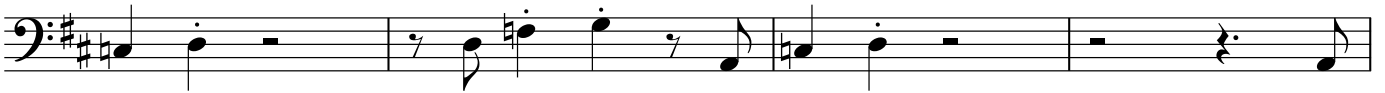
81 **Guitar solo 1**

Measures 81-84 of Guitar solo 1. The bass line features the rhythmic pattern of Chorus 2, including a triplet of eighth notes in measure 82.

129



133

137 **Verse 3**

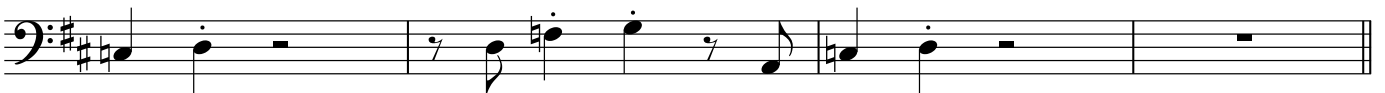
141



145



149

153 **Guitar solo 2**

157



161



165

