

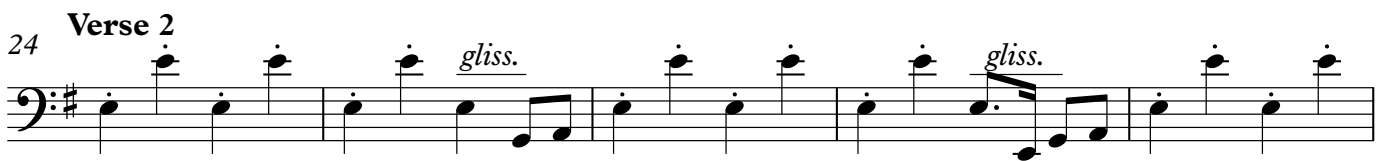
Into the fire

from Deep Purple "In rock" 1970

Blackmore/Gillan/Glover/Lord/Paice
Transcription by Andreas Brink

♩ = 88

Riff 1



40 **Guitar solo**

40 *gliss.*

44 *gliss.*

48

52 **Verse 3**

52 *gliss.*

57 *gliss.*

61 **Riff 4**

61

64

67

Poco rit.

70